



Modular Buildings | Mobile Offices | Storage Solutions

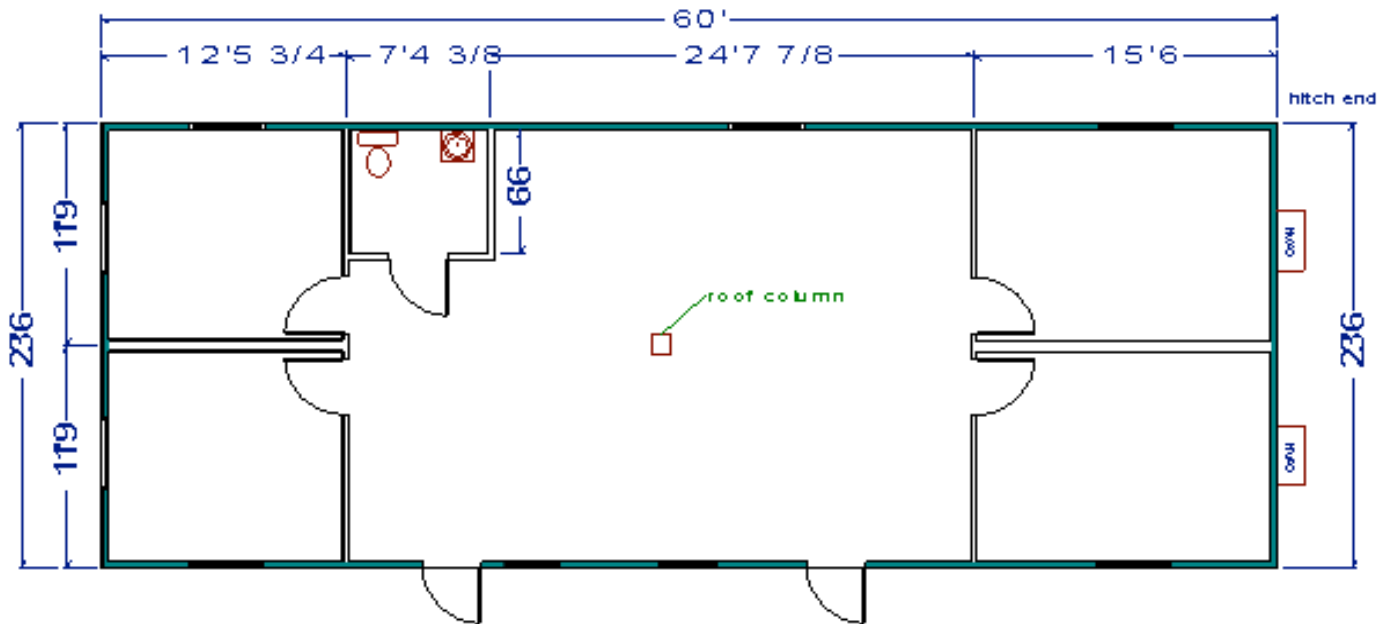
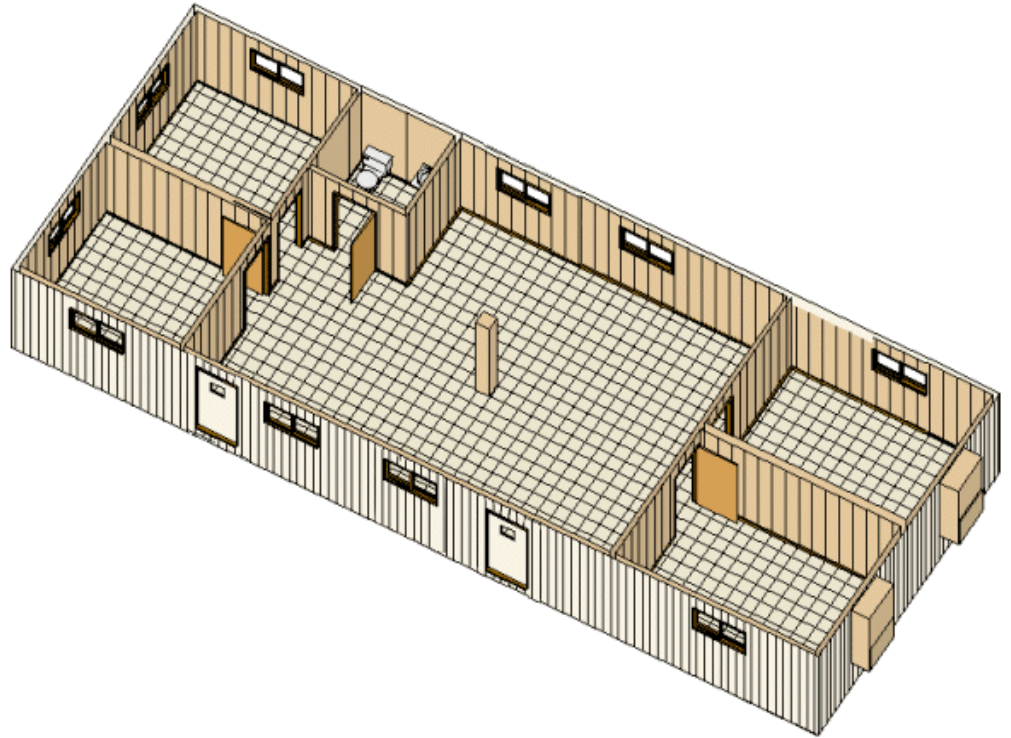
24 x 64 Modular Doublewide

*Features include:

- Steel security door
- Vinyl-sided gypsum walls
- Vinyl windows
- Rubber roof with R-19 insulation

*On 2005 models and newer

*Door, window, and partition locations may vary depending on manufacturer



800-257-2536 www.triumphmodular.com