

CONTAINER OFFICE



8 X 20 FOOT 160 FOOT OFFICE SPACE

With Triumph, you'll benefit from a winning combination of quality products, prompt delivery, competitive pricing and dependable follow through. Triumph's ground level offices are today's solution to fast accessible space. We make renting mobile office solutions easy.

Exterior Finish

Steel ribbed panel
Forklift Pockets

Interior Finish

Prefinished walls
Tile floor with vinyl wall base
8' Prefinished interior ceiling panel

Electric

Fluorescent ceiling lights
Breaker panel
Duplex receptacles

Heating / Cooling

Climate controlled with heat and AC

Insulation R-Values

Roof: R-13
Walls: R-13

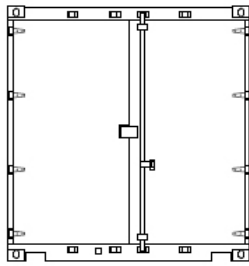


Triumph's container offices are high-security portable office containers that are fully movable and safe. All steel storage container offices are ISO-grade shipping containers that are highly secure, with lockable door handles. The ability to drop units directly on the ground simplifies delivery and portability and allows users to maximize the work environment.

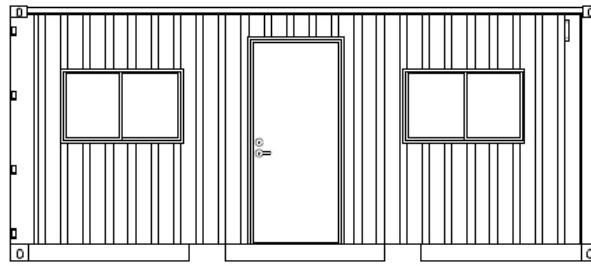
CALL 978-431-1000

VISIT TRIUMPHMODULAR.COM

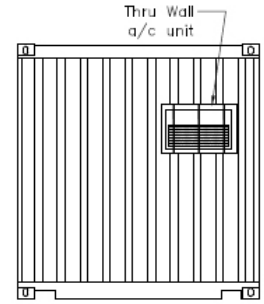
CONTAINER OFFICE



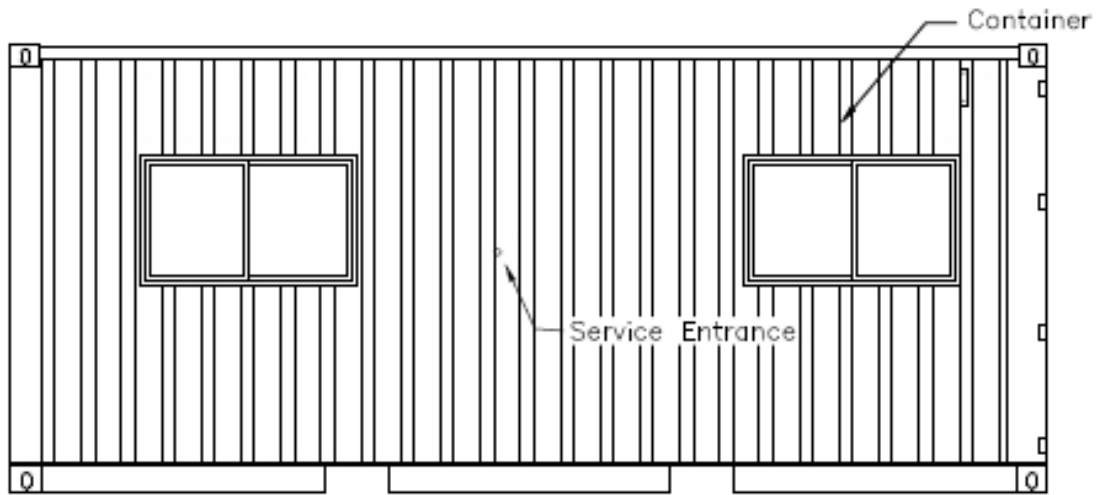
Elevation "D"



Elevation "A"



Elevation "B"



Elevation "C"

8' X 20' 160 SQ.FT.

Insulated with baseboard heating and wall mounted air conditioning unit.

Heavyweight corrugated steel sides and roof for reinforced security and durability.

Sturdy VCT Tile flooring for durability, and ease of maintenance.

Ground level access eliminates the need for stairs, ramps and skirting.

Integrated workstation includes: a built in desktop, two drawer file cabinet and shelf.

Convenient and versatile 36x60 fold down plan table.

Horizontal sliding windows with insect screens and security bars for added security.