

Client: Town of Chelmsford, MA

CHELMSFORD NORTH FIRE STATION

Living Quarters Expansion and Apparatus Bay Renovation



The Town of Chelmsford's North Fire Station has been the home of the Fire Department since it was built in 1956 and was severely in need of a renovation. The apparatus bay wasn't large enough to efficiently maneuver the fire engine and the rescue boat. The apparatus bay consisted of two garage doors at the front of the station and only one garage door at the back, so there was no way to drive straight through the bay without moving something out of the way. The living quarters also needed to be expanded and modernized, as many standards have changed since 1956.

After demolishing the prior living quarters, Triumph Modular preserved and renovated the apparatus bay and added a two-story modular addition. The new living space was designed to sleep six firefighters at any given time and accommodates a co-ed workforce. This addition also incorporates a personal locker and changing rooms, three bathrooms with showers, a full kitchen, complete gym, maintenance repair shop, gear storage, laundry room, administrative space, and an eating area/lounge.

The new buildings were designed to match the brick façade of the apparatus bay, the modular addition supplies state-of-the-art and energy-efficient features. The expanded apparatus bay now eases the movement of equipment and provides a healthier and safer environment for First Responders who spend long shifts at the fire station.

Project Details

Location
Chelmsford, MA

Square Feet
4,320

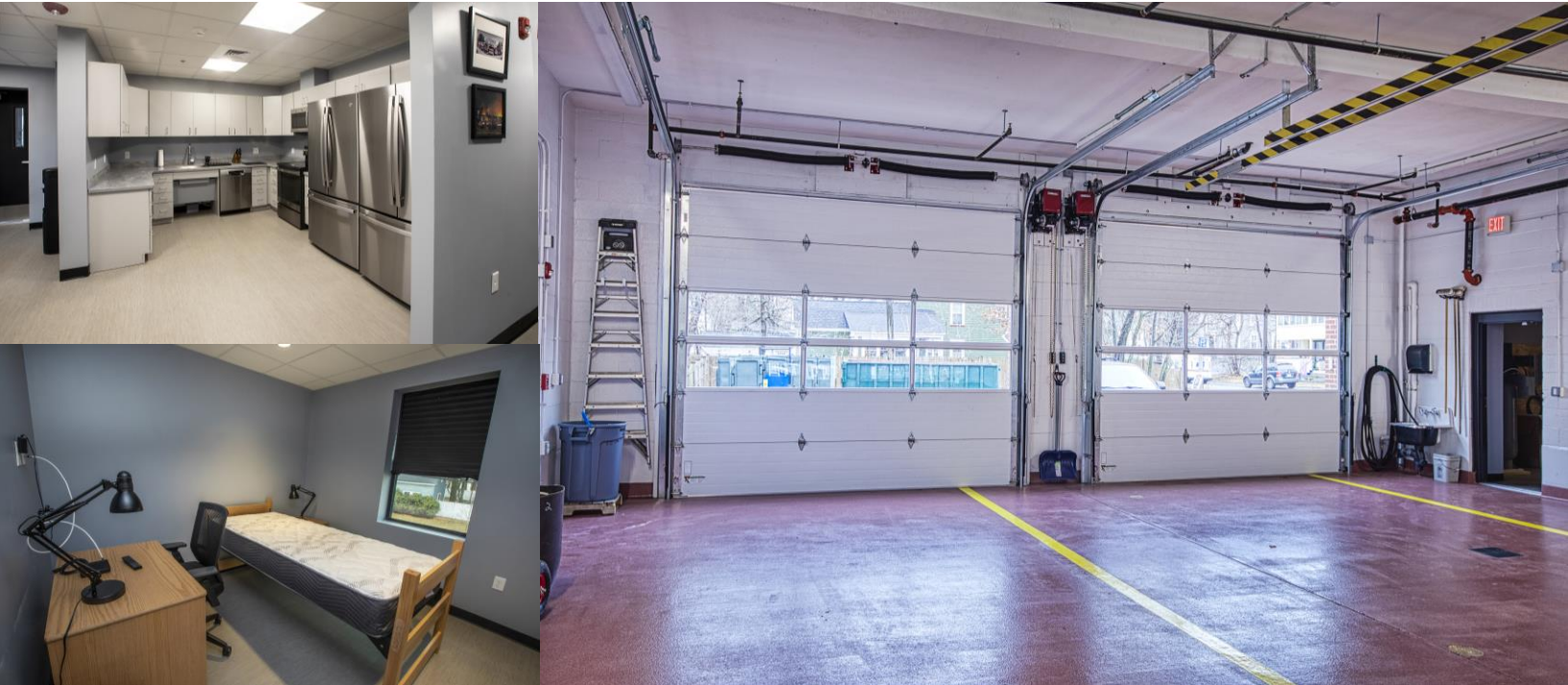
Modular Units
12

Modular Factory
MODLOGIQ, Inc.

Client: Town of Chelmsford, MA

CHELMSFORD NORTH FIRE STATION

Living Quarters Expansion and Apparatus Bay Renovation



The Challenge

- While the fire station was being renovated, Triumph relocated the Emergency Response Team into temporary living quarters on the Department of Public Works property.
- The original living quarters were undersized and didn't provide many amenities, modern comforts, or essential privacy for a co-ed fire department.
- The original living quarters were close to the apparatus bay and potential contaminants from the equipment and the firefighter's gear.

The Solution

- Modular Construction would provide the speed-to-occupancy needed to minimize the firefighters' time in temporary accommodations.
- Build a two-story modular building that would dramatically expand the sleeping quarters and enhance the living space by delivering modern amenities.
- Plan for a Gear Locker Room that can only be accessed for the apparatus bay. The gear locker room would be independently heated and ventilated.

The Results

- Finished the project in 198 days and enabled the First Responders to return to work with a fully renovated apparatus bay and expanded living quarters with state-of-the-art features.
- Designed to have the space for additional firefighters, support a co-ed environment with solo sleeping rooms, and provide accommodations for rotating shift schedules.
- We created a Gear Locker Room that couldn't be accessed via the living quarters, containing any potential contaminants and ensuring the health and safety of the firefighters.